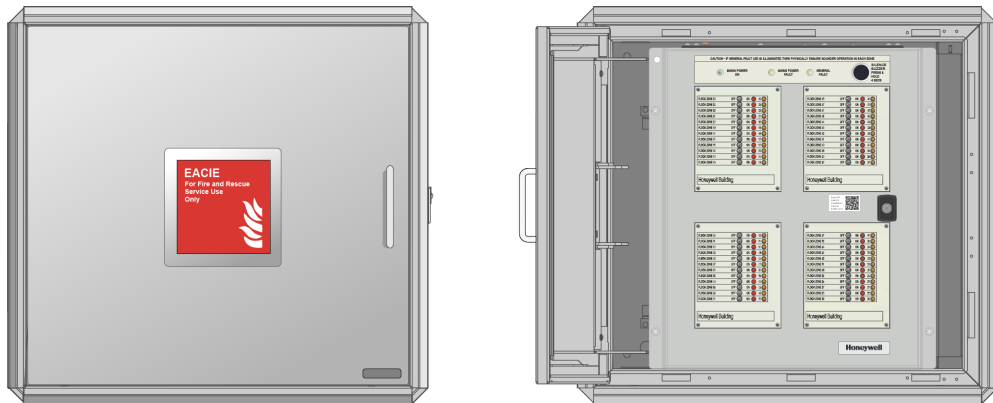


EVACSMART-EACIE

1.0



EVACSMART-EACIE PANEL INSTALLATION INSTRUCTIONS

TABLE OF CONTENTS

SECTION 1: EVACSMART-EACIE	1
1.1 EvacSmart-EACIE Control Panel	3
1.1.1. Locking Mechanism	3
1.2 Different Versions of EACIE Panel	4
1.3 Technical Data for the EACIE panel	5
1.4 Technical Data for GERDA	5
1.5 Symbols on Product	6
2.1 Installation	7
2.1.1. GERDA Installation	7
2.1.2. Honeywell EACIE Panel Installation	8
2.1.3. Wiring of Mains Power and Loops	9
2.1.4. Internal Panel Assembly and Wiring	14
2.1.5. Supplied with the EACIE Panel	14
3.1 operating Instructions	16
3.1.1. EvacSmart-EACIE	16
3.1.2. Controls and Indications of the EACIE panel	16
Steps for Evacuation	18
3.1.3. Commissioning	18
3.1.4. Variations from the BS8629 Code of Practice	19

SECTION 1: EVACSMART-EACIE

These instructions are for the EvacSmart-EACIE (Evacuation Alert Control and Indication Equipment) panel—a building evacuation system which can be installed in tower blocks of flats which are over 18m in height, if there are no other automatic fire evacuation systems present in the building. The EACIE panel ensures that the fire authorities can manually evacuate the building from one controlled location when the fire escalates.

The system includes all materials, equipment and wiring required to install the complete evacuation alert system. It also includes one or more control panels, audible and visual alarm indicating devices and relays. A red label approximately 200 mm square with a flame symbol and the words “For Fire and Rescue Service Use Only” shall be firmly fixed to the front door of the GERDA-EACIE enclosure by rivets or by at least four security screws, inside which the EACIE panel sits.



Four versions of EACIE Panel—EACIE1, EACIE2, EACIE3 and EACIE4—with different layouts are available so that you can configure the panel according to your building design. You can label the different levels/floors/flats/zones in accordance with your building where the panel will be installed, but the numbers in each panel are standardised as:

- EACIE1: Single panel—12 zone
- EACIE2: Double panel—24 zone

- EACIE3: Three panels–36 zone
- EACIE4: Four panels–48 zone

The zone labels can be engraved according to customer specifications on the fascia plates.

WARNING! The EACIE panel should not be incorporated into any communal building fire system. It is a standalone system for manual evacuation purposes only.

1.1 EVACSMART-EACIE CONTROL PANEL



The EACIE panel is equipped with indicators and controls for service and maintenance use only. The panel is simultaneously capable of indicating the presence of evacuation alerts, faults in accordance with the requirements of BS8629. In addition, the display has the minimum LED indicators provided as per the requirements of BS8629.

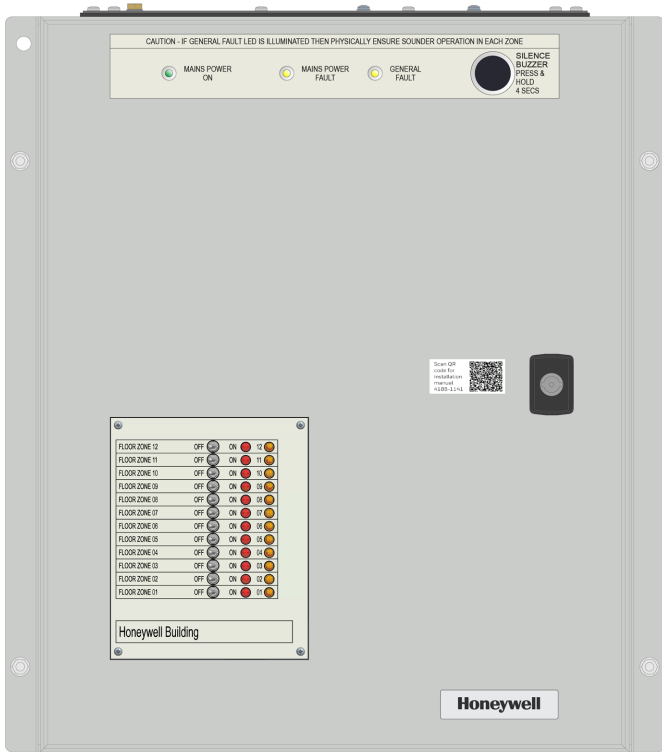
1.1.1. LOCKING MECHANISM

The cabinet incorporates a high-security lock to EN 1303:2015.

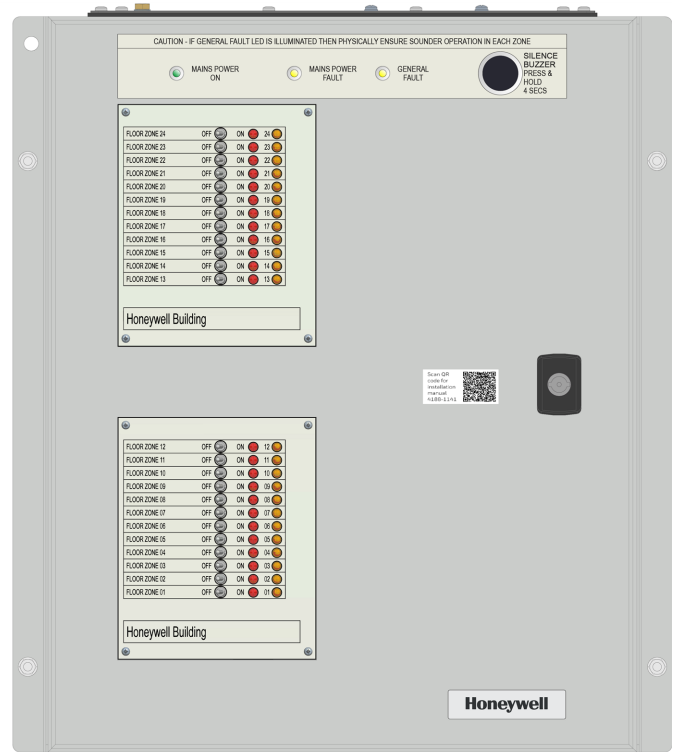
The locking mechanism will be operated by copy-protected keys that are carried by the Fire and Rescue Service (FRS), and the supply of spare or replacement keys shall be strictly controlled in order to prevent operation/access by unauthorised persons.

When the GERDA box is first shipped, it will have the padlock and keys and after it is commissioned, the landlord has to request for the keys. The Building Safety Manager ensures that keys used for maintenance purposes are controlled so that they are readily available to authorised users and returned promptly after use.

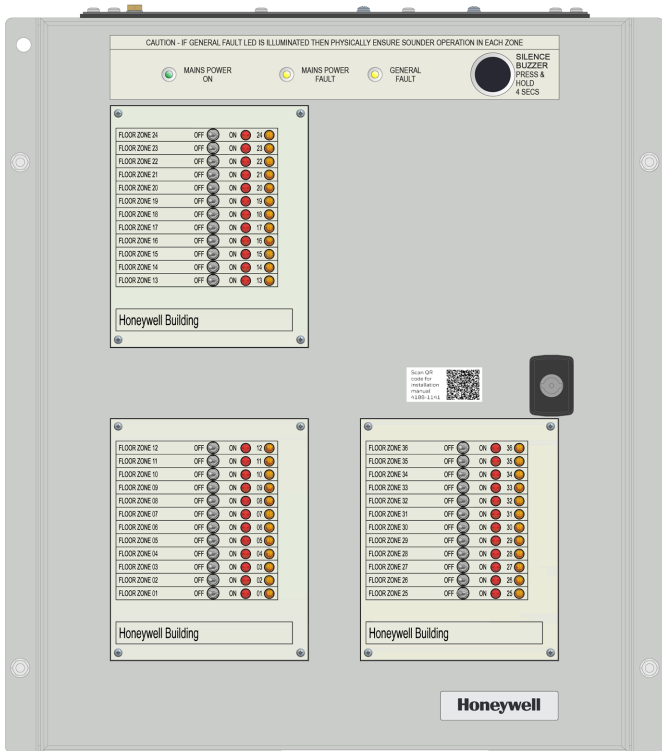
1.2 DIFFERENT VERSIONS OF EACIE PANEL



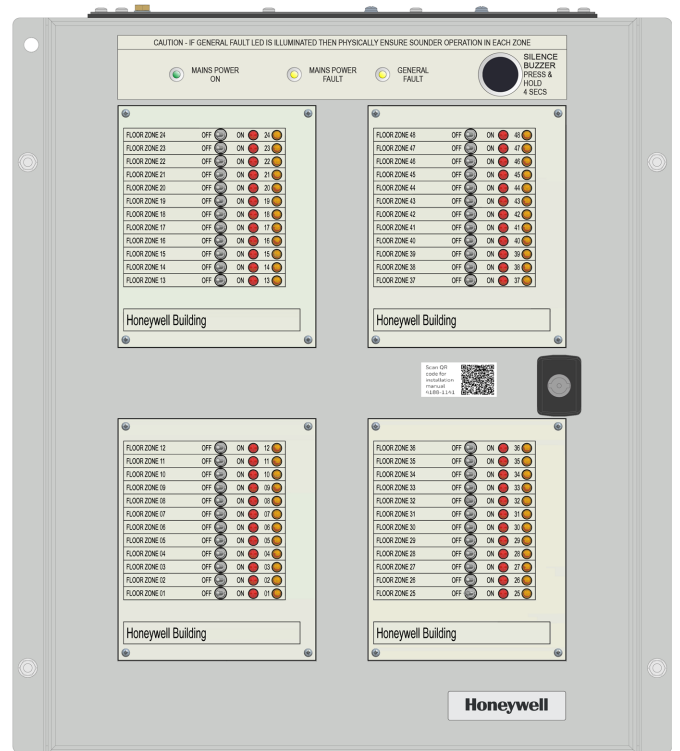
EACIE 1



EACIE 2



EACIE 3



EACIE 4

1.3 TECHNICAL DATA FOR THE EACIE PANEL






Attributes	Details
Mains supply voltage and fuses	230V -15% +10%, 50Hz/60Hz protected by: FS3T3.15AH250V, Ceramic (20 x 5mm) on PSU, Input Current - 1.4A
Battery	Panasonic - PS-1270F1-FR, single 12V, 7 Ah sealed lead acid, fire rated battery with 72 hour standby.
ELECTROMAGNETIC COMPATIBILITY (EMC) IMMUNITY	BS EN 50130-4:2011+A1:2014
ELECTROMAGNETIC COMPATIBILITY (EMC) EMISSIONS	BS EN 61000-6-3:2021
ELECTRICAL SAFETY (LVD)	BS EN 62368-1:2020 + A11:2020
RoHS	BS EN IEC 63000:2018 (2011/65/EU), 2015/863
REACH	REGULATION (EC) No. 1907/2006
Weight	18 kg (with zones and battery included)
Dimensions	448mm (w) x 501mm (h) x 181mm (d)
Colour	RAL 7035
Storage Temperature	-10 °C to +55 °C
Ambient Operating Temperature	-5 °C to +40°C
Relative Humidity	Upto 90% (Non-condensing) Temperature +5 °C to +40 °C

1.4 TECHNICAL DATA FOR GERDA

Refer to EAC005-2C4 document (GERDA Enclosure Specification Sheet) for technical details.

Attributes	Details
Weight	65+ kg
Dimensions	741mm (w) x 700mm (h) x 200mm (d)
Enclosure	Steel
Colour	RAL 9006
Storage Temperature	-10 °C to +55 °C
Ambient Operating Temperature	-5 °C to +40°C
Relative Humidity	Upto 90% (Non-condensing) Temperature +5 °C to +40 °C

1.5 SYMBOLS ON PRODUCT

Symbols	Details
	Protective Earth connection terminal.
 	The WEEE symbol. It indicates your responsibility to contribute in saving the environment by proper disposal of this waste i.e. do not dispose of this product with your other wastes. To know the right disposal mechanism, please check the applicable law.
	The CE compliance logo. This product is in conformity with the relevant European Union harmonisation legislation.
	The UKCA (UK Conformity Assessed) marking is a new UK product marking that is used for goods being placed on the market in Great Britain (England, Wales and Scotland).

2.1 INSTALLATION

For compliance with STS 205 BR2 as recommended in the BS8629 standard, the Honeywell EvacSmart-EACIE panel must be placed into a GERDA enclosure. This is to prevent vandalism or unauthorised access to the EACIE panel, which could lead to rogue evacuations.

2.1.1. GERDA INSTALLATION

The product specifications and installation instructions for the GERDA are provided in the EAC005-2C4 document (EACIE Enclosure Specification Sheet). Installation instructions are supplied with each GERDA enclosure together with masonry fixings and a fitting template. The pull handle is also supplied separately to avoid damage in transit.

01. Mount the GERDA enclosure to a solid surface using the L-shaped brackets with mounting holes.
02. The installation company should use suitable fixing methods considering the weight of the GERDA and the assembled EACIE panels and the construction of the wall.
03. For BS8629 compliant projects where a GERDA is required, the EACIE panel is designed to fit onto the 'H' brackets supplied with the GERDA. The H brackets in the GERDA box have the studs on either side.

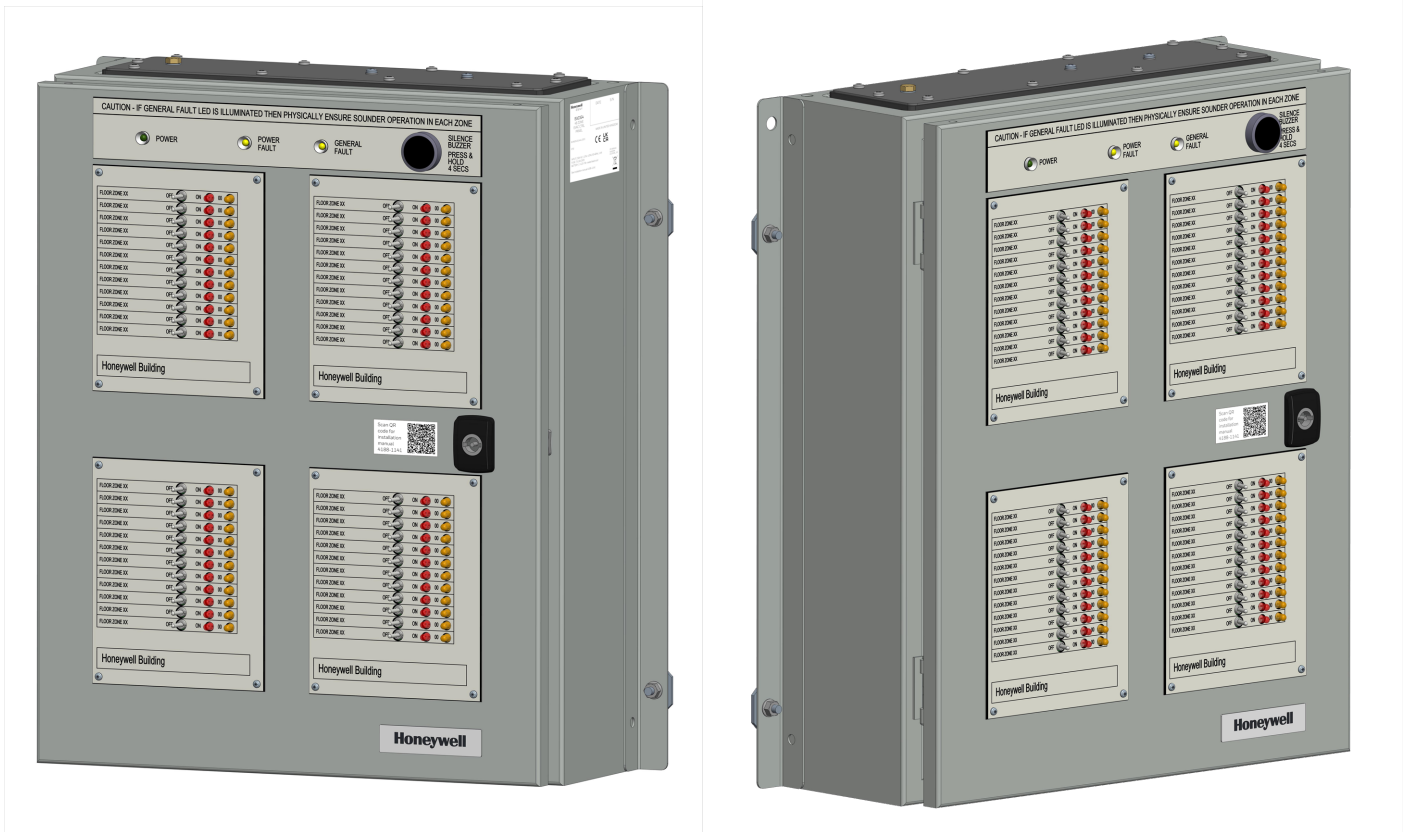


04. The GERDA enclosure keys are registered to the end user, and the lock barrels are unique to each Fire and Rescue Service area of jurisdiction.

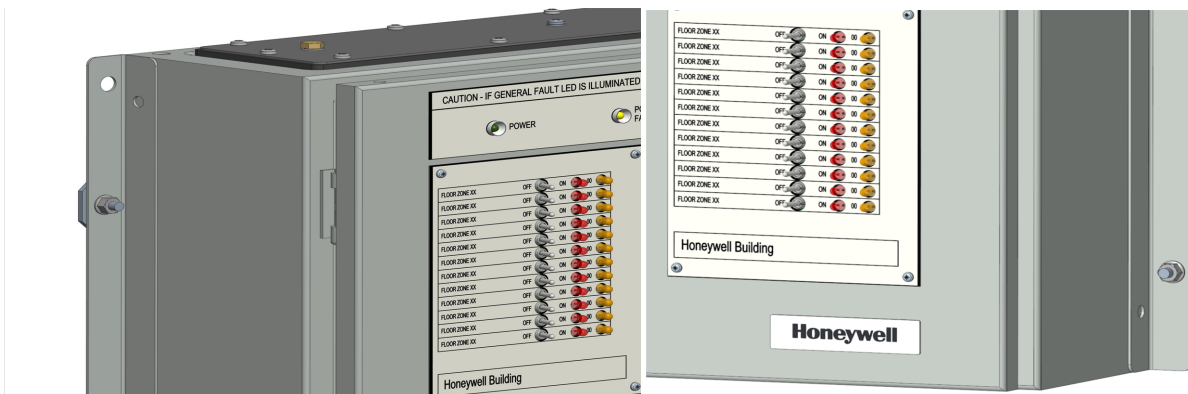
2.1.2. HONEYWELL EACIE PANEL INSTALLATION

The EACIE panel is pre-fitted vertically with mounting brackets on either side. The brackets have two guide holes marked on each side.

- Align the Honeywell EACIE panel guide holes onto the GERDA and position it with the studs in the H brackets. The installation brackets are external to the panel, allowing for easy installation. Pilot holes are marked on the EACIE panel.

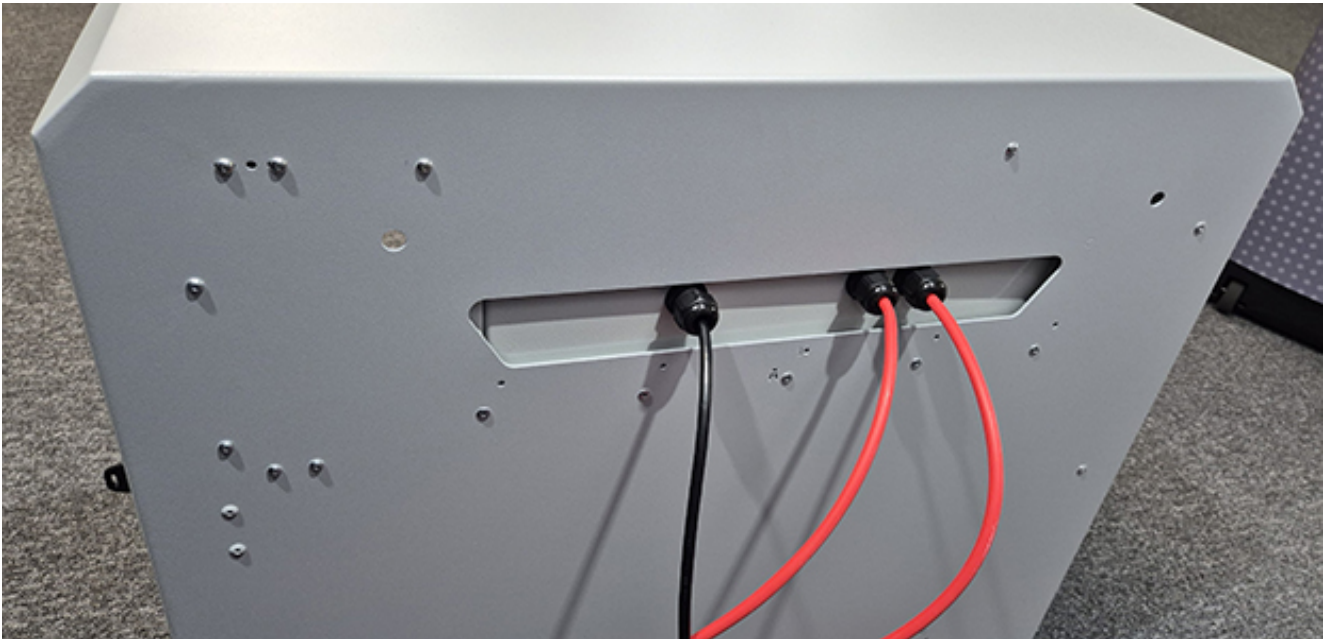


- Fix the EACIE panel onto the studs in the H bracket in GERDA using the M6 nuts and washers supplied in the spare box.



2.1.3. WIRING OF MAINS POWER AND LOOPS

01. Cables should be installed from the rear of the GERDA enclosure. The image below shows the outside connections from the left—Power glands, L1 glands, and L2 glands, which are 20-21 mm² in diameter.

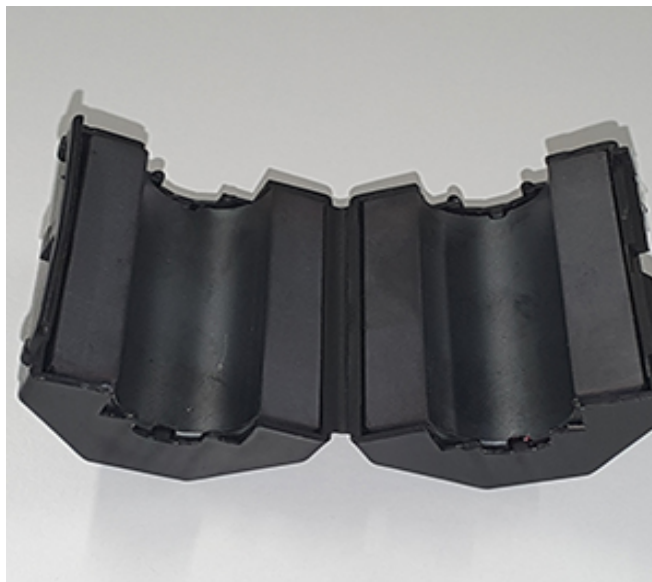


02. Mains supply to the EACIE panel must be via an unswitched 5A fused spur unit. A disconnect device is provided to disconnect both poles and must have a minimum gap of 3mm. The disconnect device should be available as part of the building installation and must be easily accessible after installation is complete.
03. Terminate each cable at the entry point leaving a 400mm tail wire length, and mark each core to identify its final connecting point.

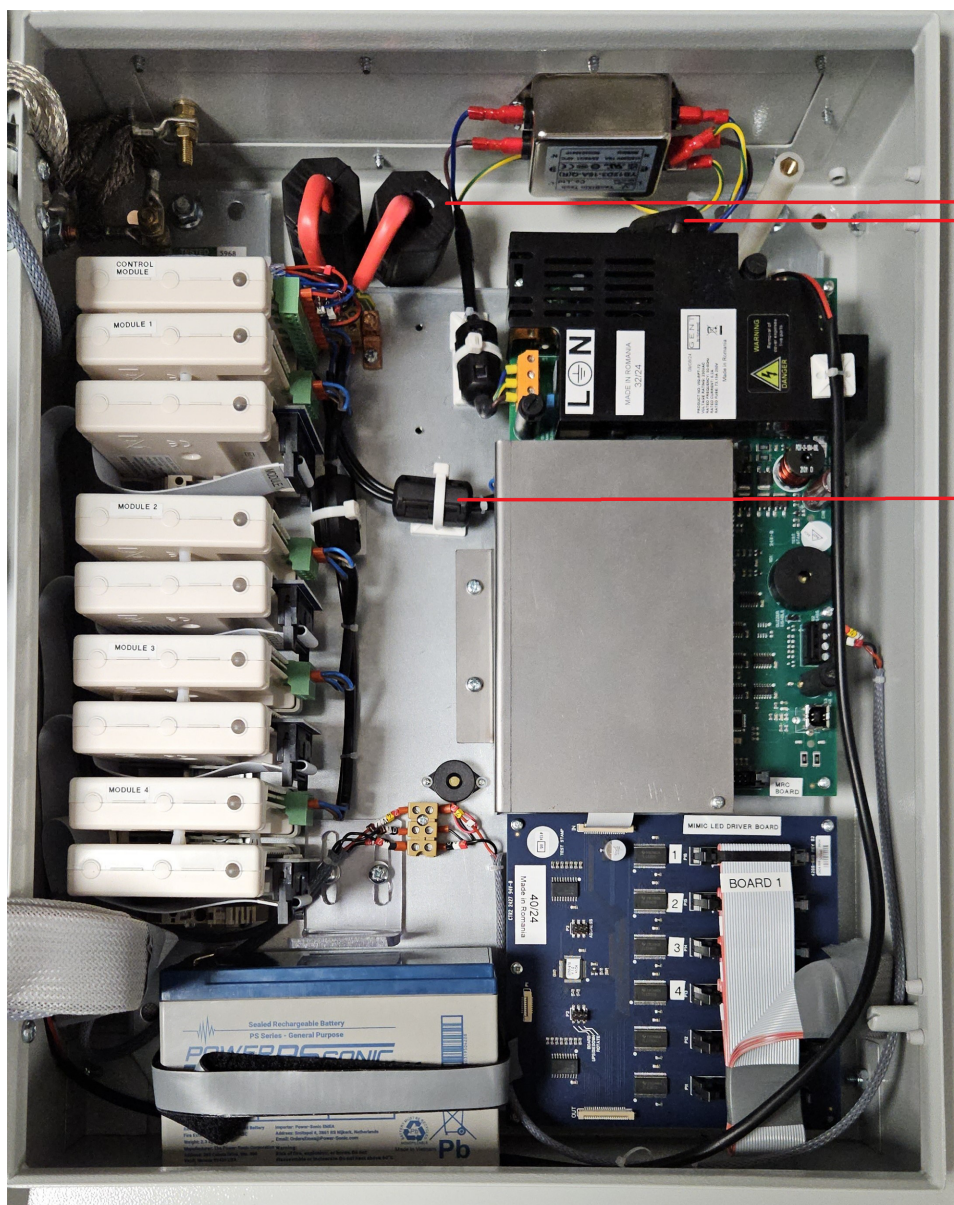
CAUTION: All mains powered equipment must be earthed.

Ensure that you make room for more length of the cable while connecting to the loops so that you can clasp each of the ferrite chokes supplied, to the cables that connect to the loop. The ferrite chokes protect against any radio frequency or electromagnetic interference.

- a. Open the ferrite choke.



b. Clasp around each of the loop wires.

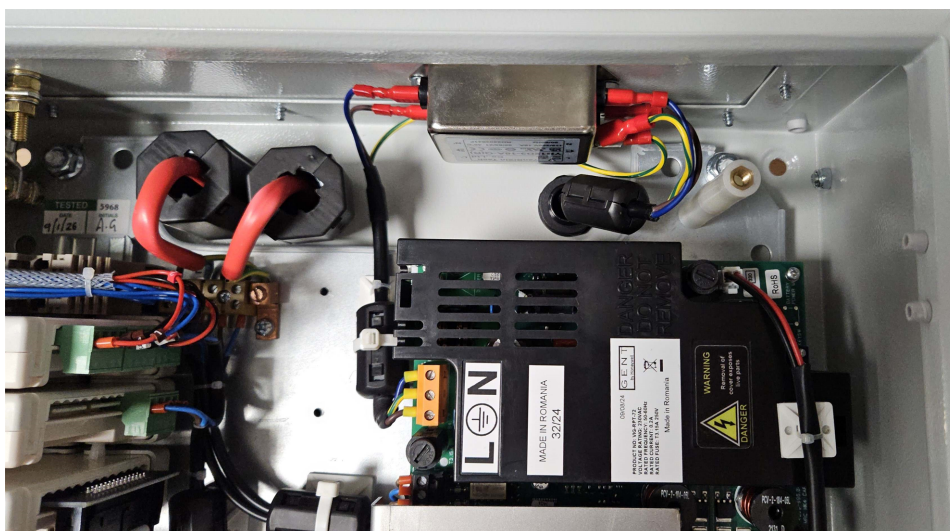


Ferrite chokes on the incoming power lines

Small ferrite chokes to be installed by the user

The small ferrite chokes are held in place with the adhesive cable ties

- c. Put in a ferrite choke on the incoming power line. There is another ferrite choke on mains out which comes pre-installed in the panel. The small ferrite chokes are held in place with the cable ties and self adhesive cable tie bases to prevent any unwanted interference.

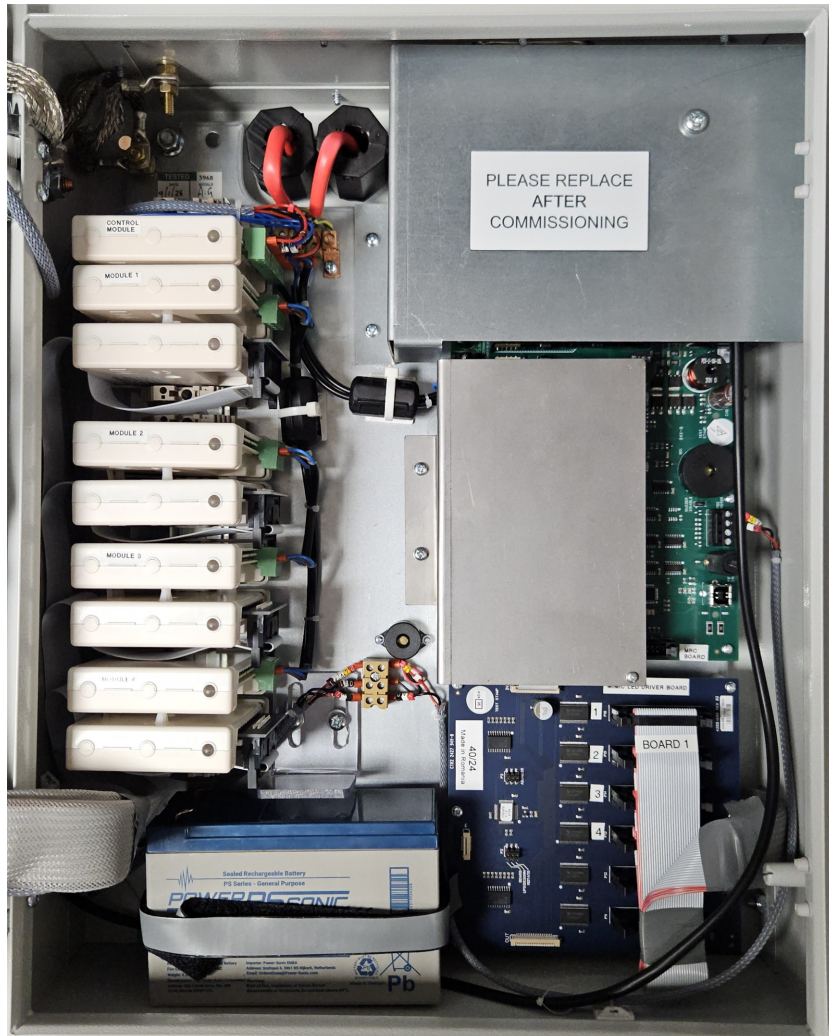


NOTE

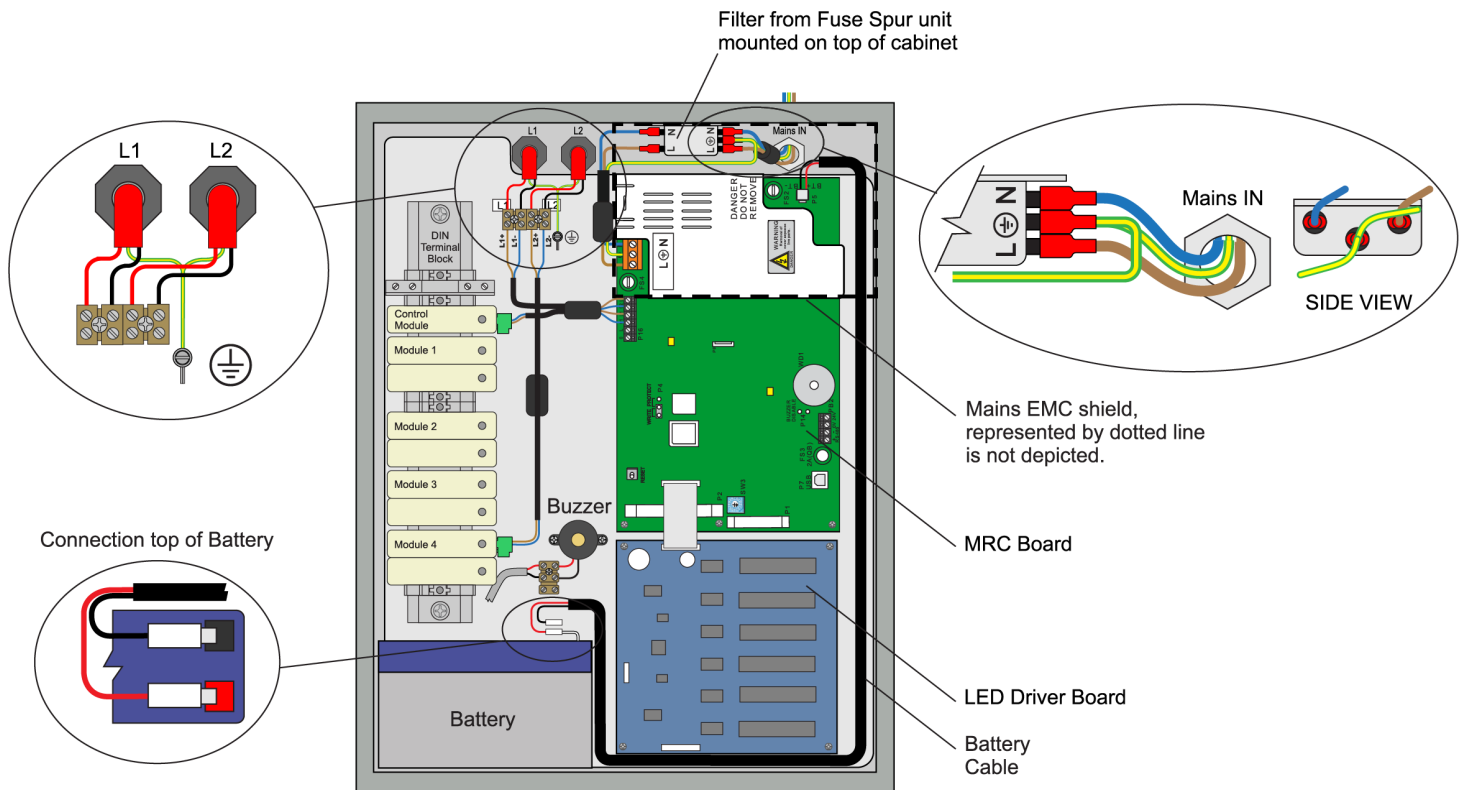
Ensure that cabling is kept as short as possible.

WARNING! If the mains cable is to remain disconnected, its tail ends must be insulated to prevent dangerous conditions arising from accidental switching on of the mains supply.

03. Remove the metal cover at the top right corner to access the mains wiring by unscrewing it. Replace the metal cover after commissioning.



04. Connect the mains wiring to the filter using the crimp connectors supplied.

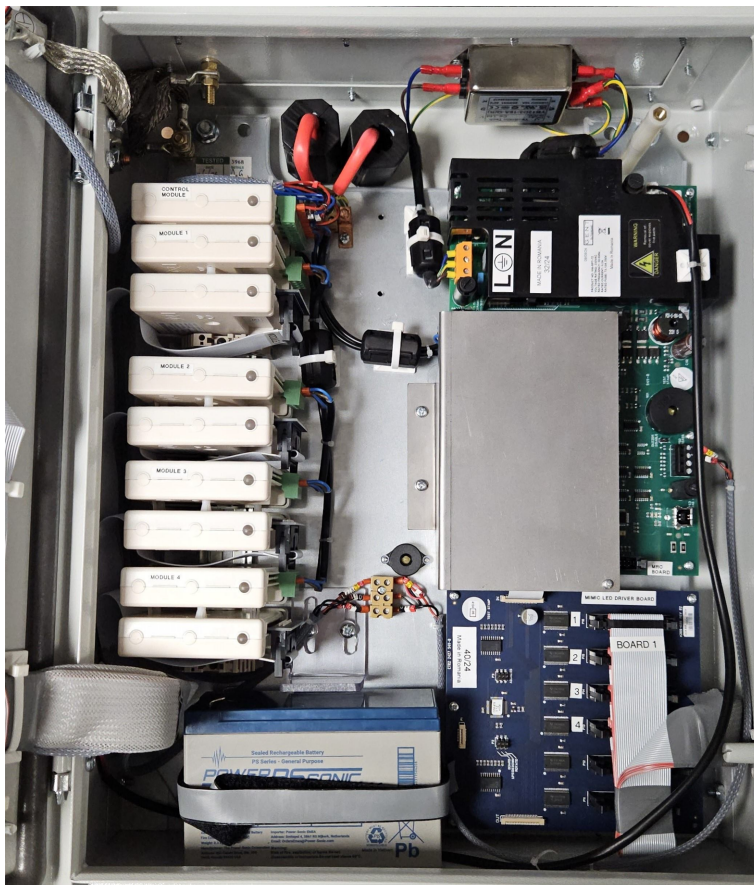


NOTE

The mains supply cable to Control and Indicating Equipment must be a standard fire resisting type and should meet PH30 classification. An approved cable for wiring to these circuits is a 3 core Mineral Insulated Cable (MICC) to BS6207:Part 1. The recommended length of cable for the respective circuit is up to 18m in length and 1.5 mm² in cross section.

05. Install the mains and loop cables into the EACIE panel.
06. The maximum length of the loop earth cabling outside the shield should be 50mm.
07. Ensure that all the shielding wires have earth sleaving.

All these procedures assume that the cable, gland, steel box (BESA box) and other related accessories are provided by the installer. The cable glands used must meet the UL94V-1 or better flammability rating.

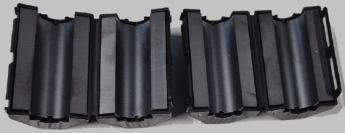


2.1.4. INTERNAL PANEL ASSEMBLY AND WIRING

CAUTION: To maintain earth continuity, an earth lead (not supplied) should be fitted from an earth point in the control panel.

2.1.5. SUPPLIED WITH THE EACIE PANEL

- 4 Push-on spade Faston Crimps terminal red--To connect the mains wiring to the filter.
- 2 Ferrite Chokes 18mm--To put on L1 and L2 loop wires.
- 4 M6 Nylock locking nut and washers--To install the EACIE panel into the Gerda box.
- Key to open the panel
- Sleeve
- 12.75 mm Ferrite choke



18mm Ferrite Chokes



Push on Faston Crimps



Key



M6 Nylock Locking Nuts



Washers



Sleeve



12.75mm Ferrite Choke

3.1 OPERATING INSTRUCTIONS

3.1.1. EVACSMART-EACIE

The EvacSmart-EACIE Panel must be mounted inside a GERDA enclosure for security reasons, which will be supplied to the site and installed separately.

GERDA has developed an enclosure specifically for the BS8629 market with electrical knock outs. The GERDA locking mechanism is used by the FRS-Secure One System and the lock and key is certified and meets the required standards mentioned in BS8629.

The GERDA enclosure weighs 90 kg and it should be noted that the installer is responsible for installing the EACIE panel into the enclosure.

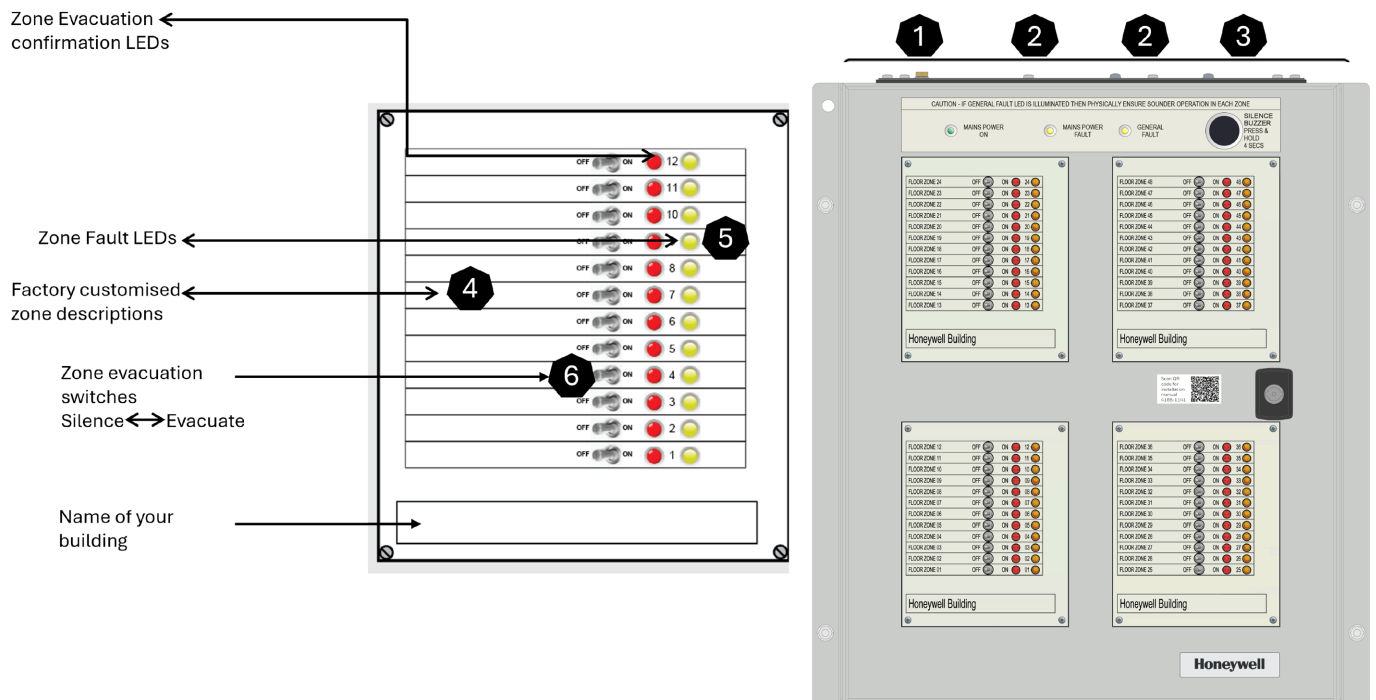
3.1.2. CONTROLS AND INDICATIONS OF THE EACIE PANEL

The following guidelines are essential for the effective operation and maintenance of the EvacSmart-EACIE. Following these instructions ensures optimal performance and enhances safety.

Some maintenance features, including individual sounder testing, fault indication, and event log access, are only available at the Vigilon/Sentri control panel or by connecting to a Honeywell CLSS Gateway and using the CLSS App/Site manager.

01. General Fault Indicator: If the General Fault LED is illuminated on the EvacSmart-EACIE, check the Vigilon/Sentri control panel or the Honeywell CLSS App/Site manager for further information. When the General Fault LED is illuminated on the EvacSmart-EACIE, the sounders in each zone may not sound when the toggle switches are operated. In this scenario, it is essential that the fire authorities check for zone sounder operation and decide if they need to manually knock on each door to evacuate residents.
02. Due to the likelihood of these buildings having no premises management responsible for monitoring the daily operation of the system, it is highly recommended to monitor faults from this system via an EN54-21 approved alarm transmission device, which is monitored by a certified Alarm Receiving Centre (ARC). This will ensure as much time is given as possible to rectify any

faults before requiring the system to aid evacuation in the event of an emergency.



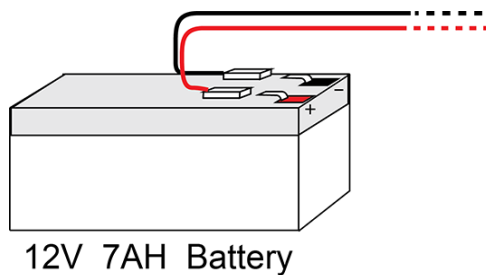
01. The green light denotes that the main power is on.
02. The yellow lights shows when there are faults in the panel.
 - Power Fault: The first yellow light is illuminated if there is a problem with the incoming mains supply or the internal battery
 - General Fault: The yellow General Fault LED is illuminated if there is a fault present on the system. Check the Vigilon/Sentri control panel or Honeywell CLSS App/Site manager for more information regarding the fault condition.
03. Press the black button to silence the buzzer. You have to hold the buzzer button for 4 seconds to silence the buzzer.
04. The panel has descriptions which can be customized according to the user descriptions of either levels/floors/flats/zones. You also have the provision to enter the description of your building at the bottom of each panel.
05. For each level you have the adjacent switch and both the evacuation confirmation LED and the fault LED.
06. The zone evacuation switches shows whether the evacuation is on/off. The **On** position will denote that the evacuation is on and the **Off** position will mean that the alarm will be silenced.

Steps for Evacuation

01. The FRS personnel can flick the switch from top levels to down as the evacuation progresses in a controlled manner. Flick the switch to right and the alarms in that level alone will go on and you can proceed with evacuation on that level/floor.
02. The LED corresponding to that floor will be red and flashing to denote that the evacuation is going on. If there is a fault in the level, the yellow light will come on.
03. Once the evacuation on a level is complete, flick the switch to left and the alarms in that level will be silenced and you can proceed with the level/floor below by following the same steps explained before.

3.1.3. COMMISSIONING

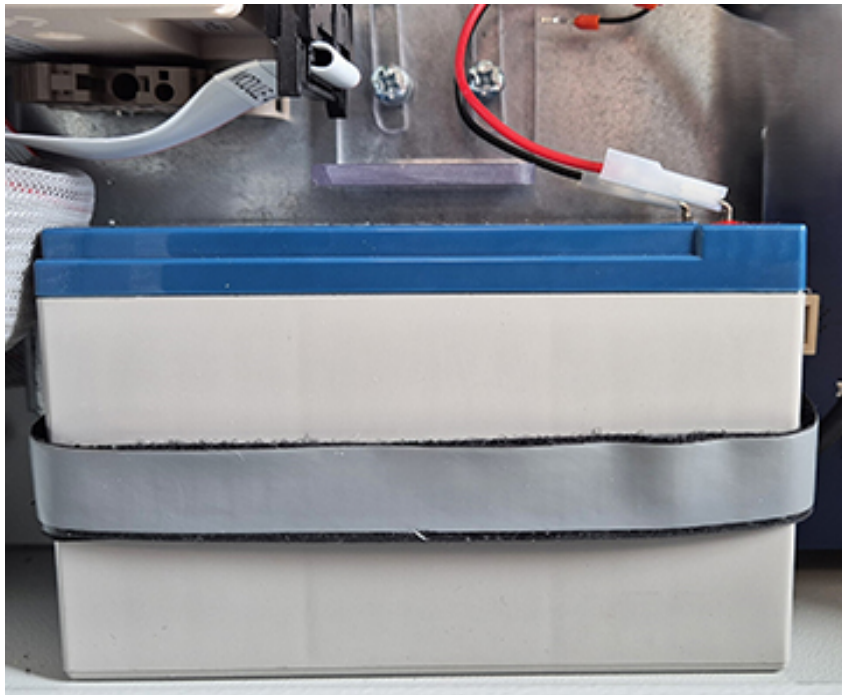
01. Commission the Vigilon system and configure to site requirements.
02. Apply power to the EACIE panel and connect the battery supply and test the system.
03. Connect the battery terminals to the correct wires as shown in the diagram below.



NOTE

If the battery wires are wrongly connected, there is a risk of accidental fire or explosion.

04. You can loosen the M5 self-tapping screws of the plate that holds the battery to give space, so that battery can fit into the space.
 - Slide down the plate to fit the top of the battery
 - Tighten the screws. Note that the screws are not tightened hard as there is a chance for the plate to break.
 - Secure the battery with the velcro belts.




WARNING! Always use the recommended replacement batteries as there is a risk of an explosion if incorrect battery is used. Dispose off used batteries according to the manufacturer's instructions.

3.1.4. VARIATIONS FROM THE BS8629 CODE OF PRACTICE

There are some maintenance features that are not incorporated into the EvacSmart-EACIE which are a variation from the BS8629 Code of Practice. They are:

01. The facility to test individual sounders during maintenance (as recommendation in 13.2.2.k) is provided by the FACP and is NOT accessible at the EACIE enclosure--this meets the recommendation that it should NOT be readily available or visible to the FRS.
02. The additional indication facilities to enable identification of fault conditions in accordance with EN 54-2 (as recommendation in 13.2.2.l) This is appropriate as the additional indication facilities are intended for use by maintenance personnel and should not be visible to the FRS.
03. The event log (recommended in 13.2.2 p) is provided by the FACP and is not accessible at the EvacSmart-EACIE enclosure.

NOTE: The EVACSMART system comprises the EACIE in a secure enclosure (accessible to the FRS in event of an emergency) with a FACP which should be located in a secure area (accessible to maintenance/service personnel) in the vicinity of the EACIE to meet the recommendations of BS8629:20xx.

Honeywell GENT EACIE4 48 ZONE EVAC CTRL PANEL BS 8629:2019+A1:2023 IP30 INPUT: 230V AC (-15% +10%) 50-60Hz, 1.4A FUZE: T3.15A 250V BATTERY: 1 X 12V 7Ah sealed lead-acid See installation manual 4188-1141	DATE	S/N
	MADE IN UNITED KINGDOM CE UK CA UK address: Leicester, LE19 0AL, UK 	

Gent by Honeywell reserves the right to revise this publication from time to time and make changes to the content hereof without obligation to notify any person of such revisions of changes.

Honeywell Building Automation, Building 5 Carlton Park, King Edward Avenue, Narborough, Leicester, LE19 0AL, UK

Technical support: <https://buildings.honeywell.com/content/hbtbt/gb/en/support/technical-support.html>
Telephone: +44 (0) 2034091779

Honeywell
GENT