

This document shows how the Honeywell EVCS Assistance Alarm Plates comply with the relevant standards. For the purpose of this document BS 8300 refers to BS 8300-2:2018 – Design of an accessible and inclusive built environment and BR-AD-M refers to Building Regulations Approved Document M Volume 2 – Buildings Other Than Dwellings 2015 Edition Incorporating 2020 and 2024 Amendments.

### Alarm Acknowledgement

#### **BS 8300 Clause 13.7.2**

*Visual and audible feedback should be provided to indicate that, when the alarm has been operated, the emergency assistance call has been acknowledged and is being actioned.*

*NOTE 1 An indication that assistance is on its way will reassure those in distress.*

#### **BR-AD-M Section 5.4.h.i**

*h. any emergency assistance alarm system has:*

*i. visual and audible indicators to confirm that an emergency call has been received.*

### EVCS Assistance Alarm Compliance

Honeywell EVCS assistance alarms provides an Acknowledgement function on both the “Accept” function on EVCS Master Stations, these devices should be located in the staffed areas. Visual and audible feedback is provided by a change in tone from the over-door plate and the blue indication changing from flashing to steady. Signage is provided with each kit detailing the change in indication and sound.

### Differentiation from Fire Alarms

#### **BS 8300 Clause 13.7.2**

An emergency assistance alarm system, where provided, should be designed so that it is not confused visually or audibly with a fire alarm

#### **BR-AD-M Section 5.4.h.iii**

iii. a signal that is distinguishable visually and audibly from the fire alarm.

### EVCS Assistance Alarm Compliance

Honeywell EVCS assistance alarms use blue indication in all devices rather than red indication which is generally associated with fire alarm systems.

### Ceiling Pull Cord

#### **BS 8300 Clause 13.7.2.2**

An emergency assistance pull cord, coloured red, should be provided with two red bangles of 50 mm diameter, one set at a height between 800 mm and 1 000 mm and the other set at 100 mm above floor level.

*NOTE 2 An additional pull cord or, preferably, a low-level alarm (above the skirting up to a maximum of 200 mm from floor level) would benefit somebody who has fallen onto the main floor area, particularly in larger rooms.*

#### **BS 8300 Clause 19.2.10**

An emergency assistance alarm in accordance with **13.7.2** should be provided in an accessible bedroom and activated by a pull cord sited such that it can be operated both from the bed and from an adjacent floor area.

#### **BR-AD-M Section 4.30.e**

pull cords for emergency alarm systems are coloured red, located as close to a wall as possible and have two red 50mm diameter bangles, one set at 100mm and the other set between 800mm and 1000mm above the floor.

### EVCS Assistance Alarm Compliance

Honeywell EVCS assistance alarms has a Ceiling pull plate comprising a 2.8m red cord with 2× 50mm red bangles. The upper bangle position preset at between 800mm and 1000mm above floor level. The lower preset at 100mm above floor level. A low level strip switch option is available for the Honeywell EVCS system

## Over Door Indication

### **BS 8300 Clause 13.7.2**

The emergency assistance alarm indicator outside the room or compartment should be located so that it is easily seen and heard by people able to give assistance and indicates where help is required.

*NOTE 3 An additional alarm indicator may also be sited remotely, e.g. in a permanently staffed area of the building.*

### **BR-AD-M Section 4.24 r**

an emergency assistance call signal outside an accessible bedroom is located so that it can be easily seen and heard by those able to give assistance and, in any case, at a central control point.

### **BR-AD-M Section 5.1 n**

the emergency assistance call signal outside the toilet compartment is located so that it can be easily seen and heard by those able to give assistance

## **EVCS Assistance Alarm Compliance**

The assistance alarm overdoor plate comprises of blue indicator and high volume buzzer. An additional over door plate can be added to the circuit if directly wired to a master station to provide further audible and visual warning.

## Alarm Cancel

### **BS 8300 Clause 13.7.2**

The reset control for the emergency assistance alarm should be clearly marked as such and should be reachable from a wheelchair and, where relevant, from the WC, the tip-up seat in a shower facility, or the bed in an accessible bedroom. The reset control should be easy to operate and located with its bottom edge between 800 mm and 1 000 mm above floor level. The marking of the reset control should be both visible and tactile.

### **BS 8300 Clause 19.2.10**

The reset control for the emergency assistance alarm should be reachable from both a wheelchair and the bed.

### **BR-AD-M Section 4.24 q**

an emergency assistance alarm (together with a reset button) is located in a wheelchair-accessible bedroom and activated by a pull cord, sited so that it can be operated both from the bed and from an adjacent floor area.

### **BR-AD-M Section 5.4 h.ii**

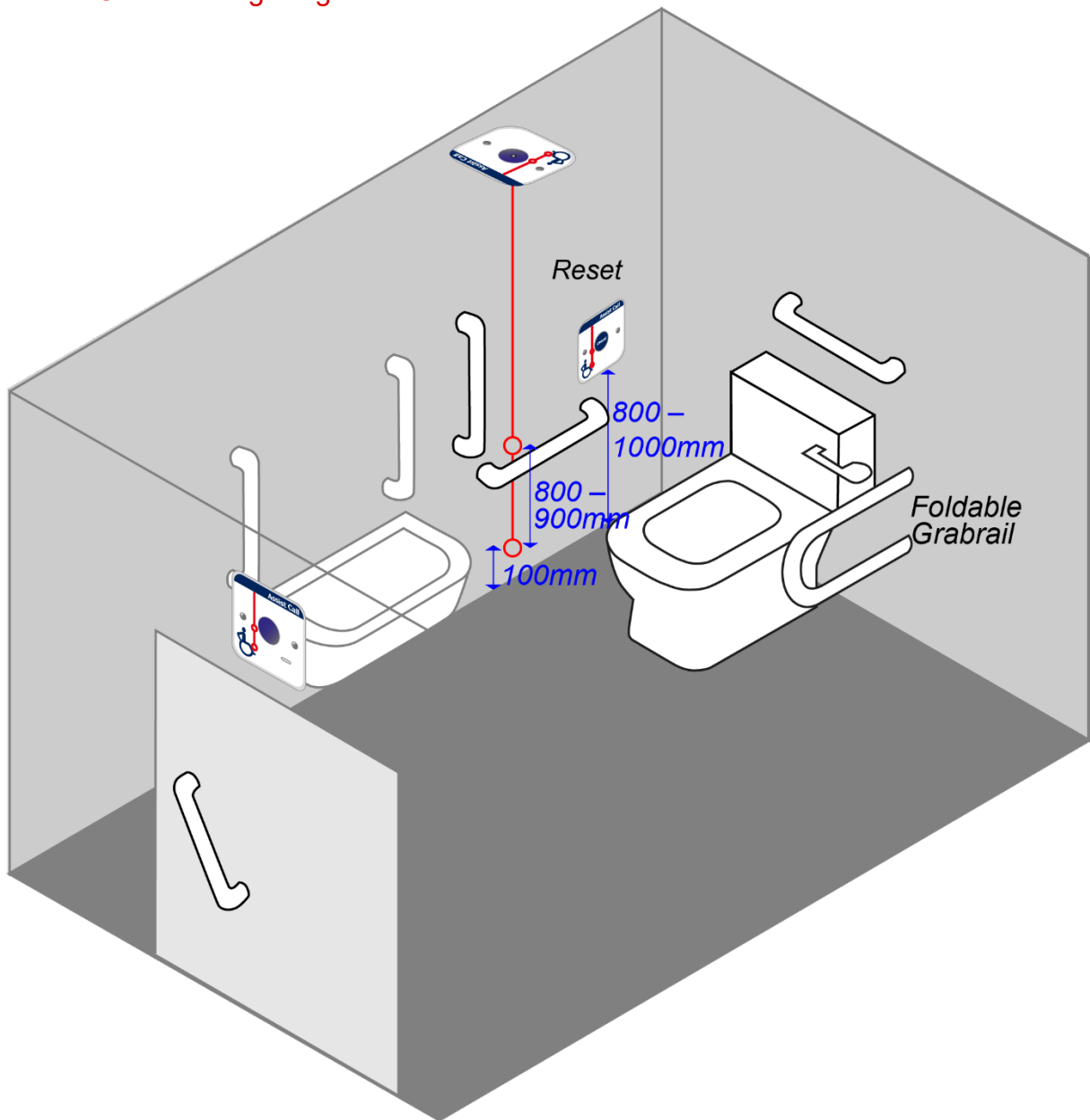
a reset control reachable from a wheelchair and the WC, or from the wheelchair and the shower/changing seat.

## **EVCS Assistance Alarm Compliance**

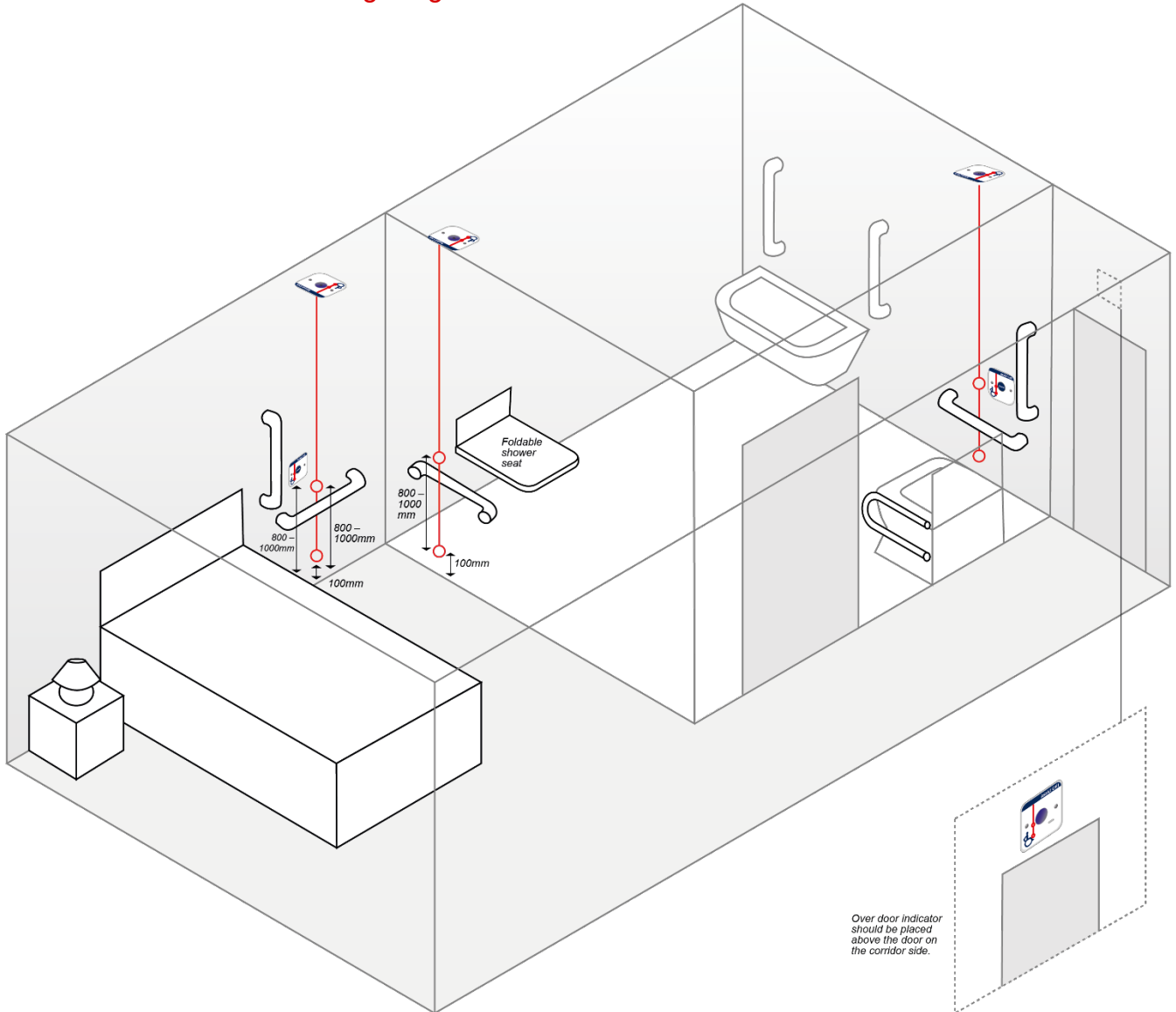
The Honeywell EVCS assistance alarm has a separate Cancel Plate with blue indication, buzzer and tactile braille button. The emergency assistance alarm should not be able to be reset from a position other than from where the call originates from this is to ensure that the occupant is given the necessary assistance.

An additional cancel plate is provided as part of the EVCS-ACB Bedroom kit to be positioned in the bed transfer area; the bedroom kit must be wired directly from a master station or Assist call controller.

## Accessible WC Positioning Diagram



# Accessible Bedroom Positioning Diagram



# Honeywell



WEEE  
Compliant  
Product

EVCS Assistance Alarm Standards Compliance Rev 1  
02/26 2026 Honeywell

